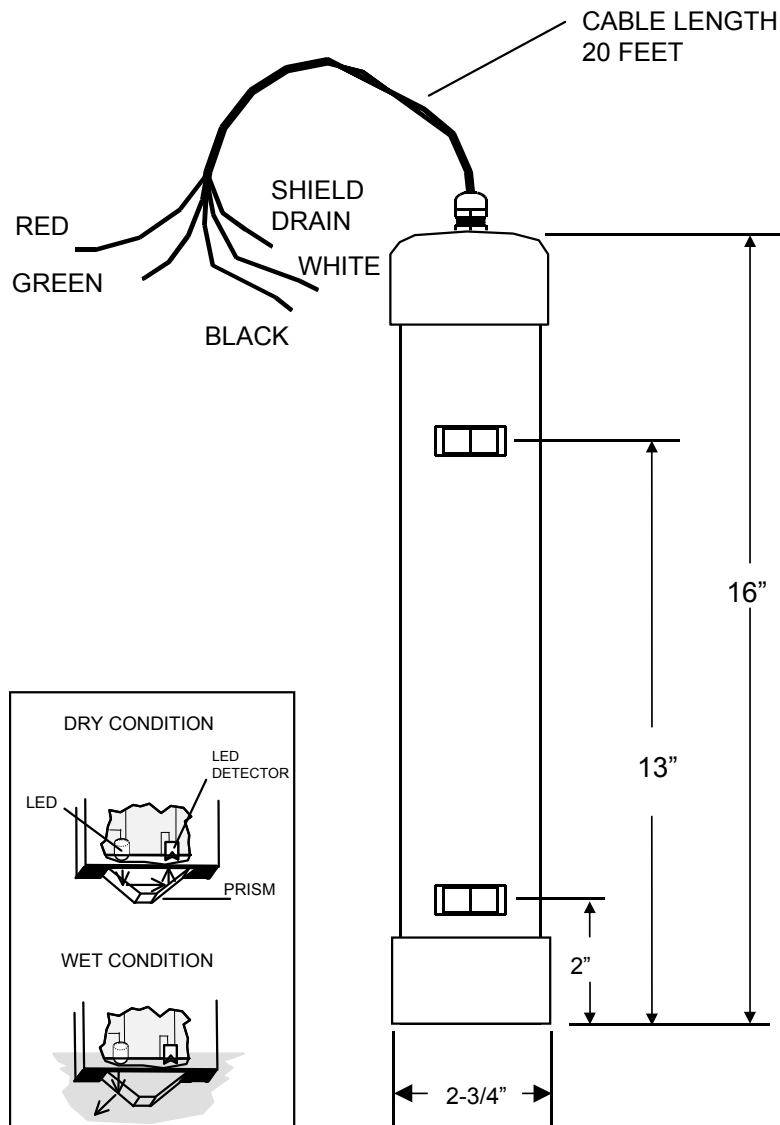


RESERVOIR SENSOR

L-R-1 SPECIFICATIONS
SOLID STATE (NO MOVING PARTS)

OPERATING TEMPERATURE

-40 TO +140 F

POWER

2 VDC @ 13 mA

WEIGHT

2 pounds

RESPONSE TIME

Immediate

PRINCIPLES OF OPERATION

LIQUIDS (ex: fuel, water) – Photo Optic

DRY CONDITION –

High level: Normally closed light beam

Low Level: Normally open light beam

ALARM CONDITION –

Hi level: Opens (refracts) normally closed light beam

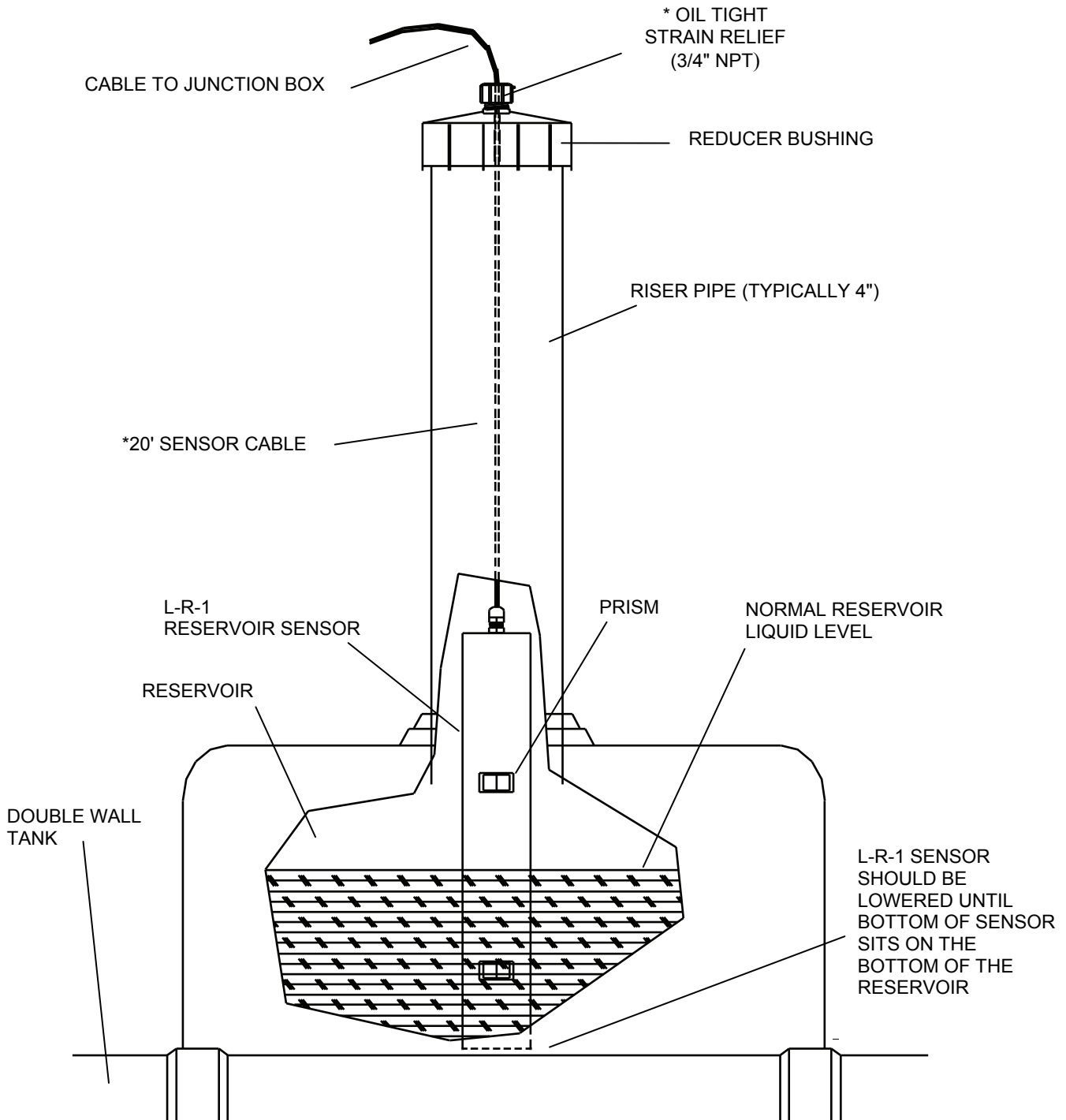
Low level: Closes normally open light beam

SENSOR CABLE

Shielded 22 AWG UL-E118830 CM

Maximum length 2000 feet

TYPICAL RESERVOIR SENSOR INSTALLATION



*SUPPLIED BY OMNTEC MFG., INC.