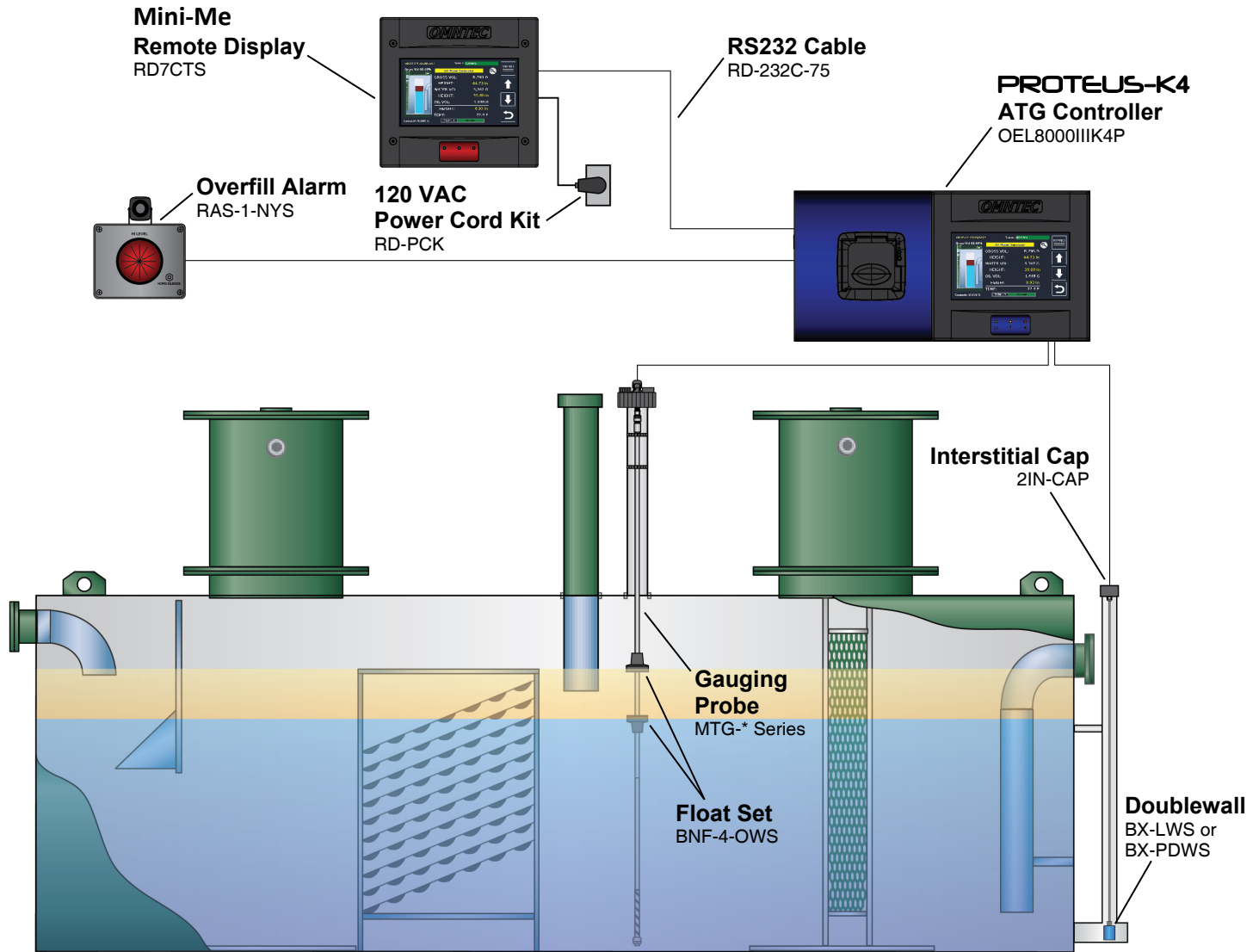


# PROTEUS® K4 Basics (OWS)



OEL8000IIK4 System Parts List for OWS Tanks

|                             |  |
|-----------------------------|--|
| OEL8000IIK4                 | <b>PROTEUS® K4</b> Tank Gauging Controller with 7" color touch screen, (1) RS-232 port, & Ethernet. Accepts up to 4 MTG Series inventory probes and 16 BX Series leak sensors. |
| OEL8000IIK4P                | (same as above but includes printer)   |
| MTG-*                       | Magnetostrictive probe (*denotes probe length, price for up to 12 ft.). <i>Consult factory for alternate probes sizes and styles.</i>  |
| BNF-4-OWS                   | 4" Buna float set for oil water separator tanks  |
| BX-LWS**                    | Sensor for monitoring the dry interstice of double-wall steel tanks. Comes with 25' of cable.  |
| BX-PDWS**                   | (product distinguishing version)<br>**For tanks less than 8' diameter, a BX-LS or BX-PDS can be used.  |
| 2IN-CAP                     | 2" cap for interstitial sensor   |
| RAS-1-NYS                   | Common overfill remote annunciator in Nema 4X enclosure, with acknowledgement switch, 100db horn, and high intensity strobe light.   |
| <b>Optional Accessories</b> |  |
| RD7CTS                      | <b>PROTEUS® Mini-Me™</b> universal remote ATG monitor with 7" color touch screen display for audio/visual alarms and current inventory.  |
| RD-232C-75                  | 75 feet RS232 cable for use with RD7CTS remote display.  |
| RD7CTS-485                  | <b>PROTEUS® Mini-Me™</b> RS-485 universal remote ATG monitor with 7" color touch screen display for audio/visual alarms and current inventory. (requires DB-485 board)         |
| DB-485                      | RS-485 board (required when using RD7CTS-485)  |
| RD-PCK                      | 120 VAC power cord kit for use with <b>PROTEUS®</b> remote displays.   |
| C232-422-RD7CTS             | RS-232-422 Booster Kit to increase distance of RS-232 output 3,000 feet for use with RD7CTS remote display (Includes 2 converters and 2 power transformers).                   |
| WRS-232                     | Wireless RS-232 link includes both tank gauge and remote transceivers.   |
| WRS-232R                    | Wireless RS-232 repeater for extending WRS-232 wireless reach.   |

**OMNTEC®**