



OMNTEC

Advanced Tank Monitoring & Leak Detection

Building and Industrial Automation Gateway

Part Number: C232-BAC
C485-BAC



Description

The C232-BAC (or C485-BAC) is a high-performance Building and Industrial Automation Gateway to easily intergrade OMNTEC's **PROTEUS** Series OEL8000III to networks in commercial buildings and industrial plants.

The C232-BAC (or C485-BAC) converts our MODBUS protocol via MODBUS TCP or RTU (RS-232 or RS-485*) from the PROTEUS Series OEL8000III to BACnet IP. The unit will come programmed for a simple plug and play installation.

Accessory Kit (included): AC Power Supply and DIN mounting bracket assembly

**OEL8000III console requires RS-485 port for standard installation.*



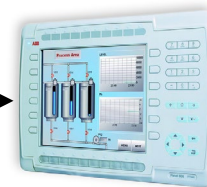
OEL8000III K/X

MODBUS TCP
or
MODBUS RTU



C232-BAC / C485-BAC

BACnet IP

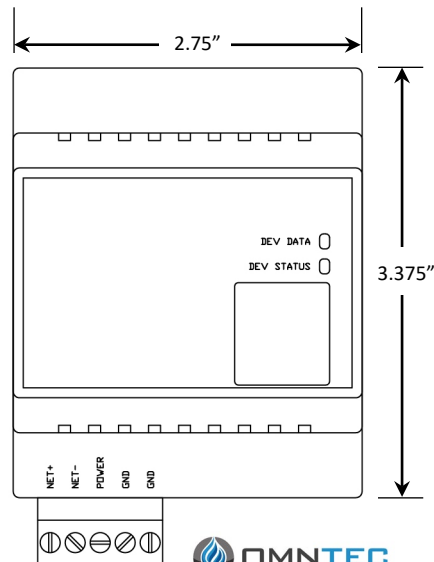


BMS

Specifications

Environment:	Operating temperature: -40 deg. C to +85 deg. C Relative humidity: 5% to 90%
Dimensions:	(H) 3.375" x (W) 2.75" x (D) 2.25"
Power Supply:	Power: 12-24V DC/AC 50/60Hz
Compliance:	FCC Class A, CE Marking UL 916 and (Canadian) C22.2 No: 205.M1983
Interfaces:	1xRS485 Port (standard) 1xRS232 Port (must be specified) 1x 10/100/1000 RJ45 Network

Specifications subject to change without notice, verify with manufacturer.



2420 Pond Road
Ronkonkoma, NY 11779
+1.631.981.2001
+1.631.981.2007
omntec@omntec.com
www.omntec.com